



Department of Chemistry
NMR Facilities
Director: Dr. Carlos A. Steren

The DEPT EXPERIMENT (Varian 300 MHz)

The different carbon signals observed on a DEPT experiment are detailed below. Blue and red indicate signal phase up or down respectively.

DEPT 45°
CH, CH₂, CH₃

DEPT 90°
CH

DEPT 135°
CH, CH₂, CH₃

Setting up the DEPT experiment.

- 1.- Call the "HYDROGEN" experiment. Don't run it.
- 2.- In the same experimental page call the DEPT experiment.

DEPT options

For a 90° DEPT spectrum, on the “XH multiplicity” line select the “XH only” option (Acquire tab).

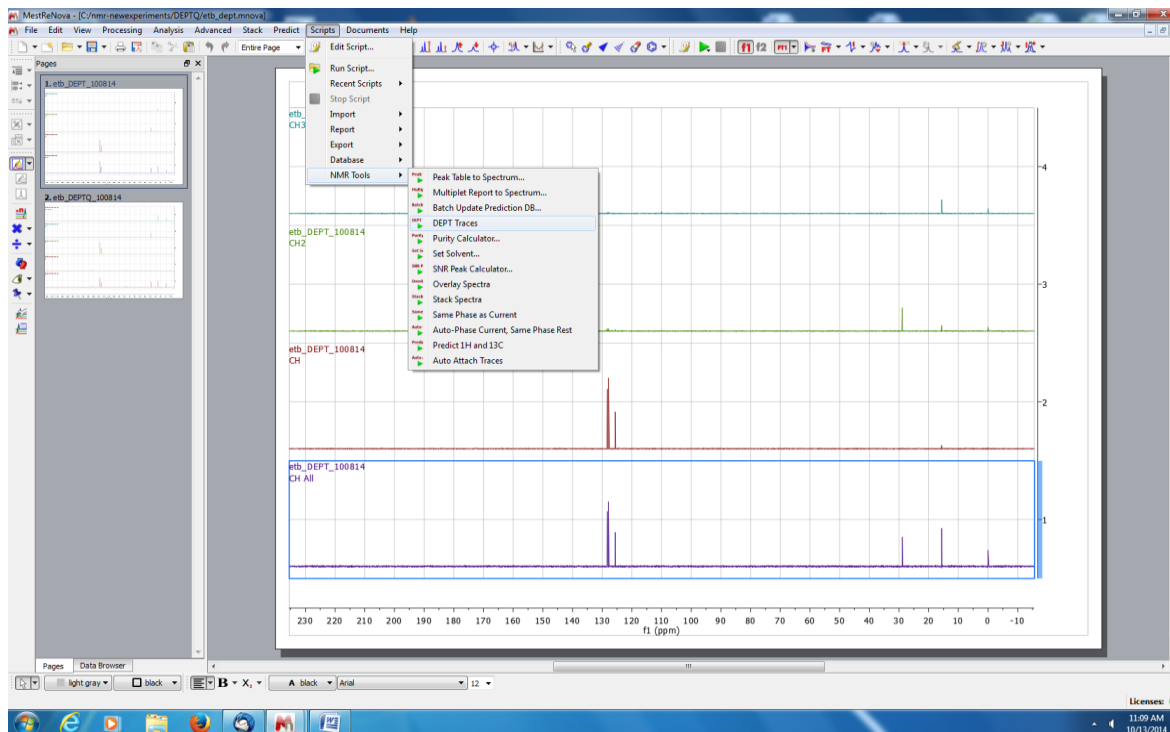
For a 135° DEPT spectrum select the “XH/XH3 up & XH2 down” option.

Full editing of carbon spectra:

The DEPT generates 4 spectra. These spectra can be processed with MestreNova to yield “full carbon edited spectra”, as detailed below,

1.- Open the DEPT spectra on MestreNova

2.- Run the script “DEPT Traces” from the menu Scripts → NMR Tools → DEPT Traces.



DEPT: full carbon edited spectra (CH₃, CH₂ and CH)

