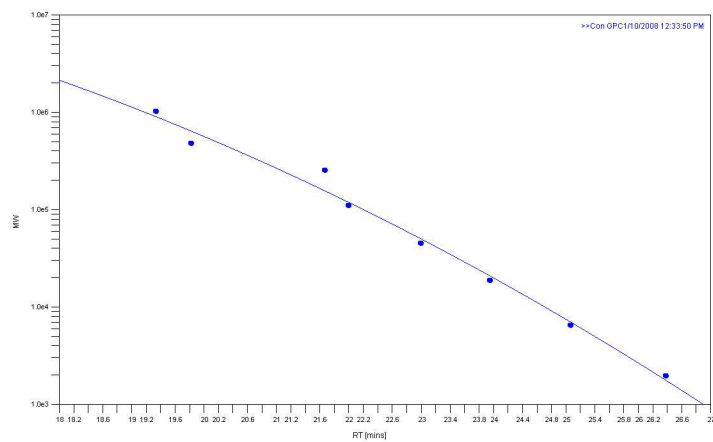
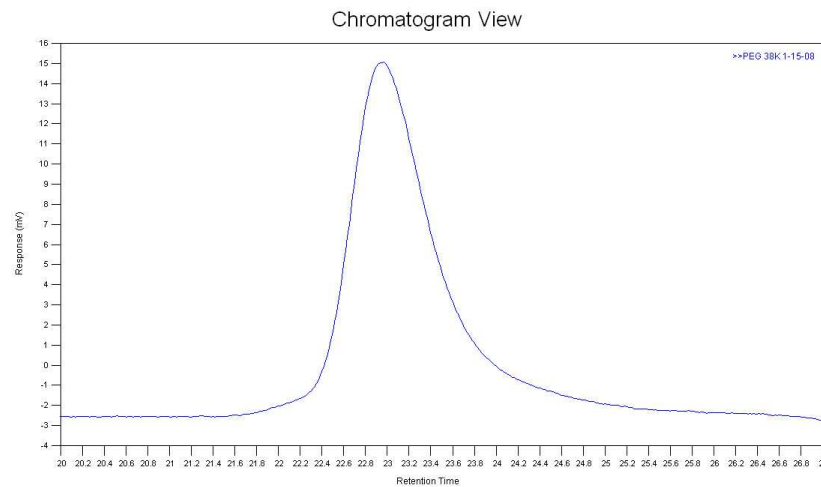


## Aqueous GPC

PEO/PEG Calibration in H<sub>2</sub>O + 0.02%NaN<sub>3</sub>  
at ambient temperature ( $\approx 22^\circ\text{C}$ )



RI results 38K PEG in H<sub>2</sub>O + 0.02%NaN<sub>3</sub>  
at ambient temperature ( $\approx 22^\circ\text{C}$ )



M<sub>w</sub> = 48,825  
M<sub>n</sub> = 38,703  
M<sub>w</sub>/M<sub>n</sub> = 1.262